



## 15 Catchlove Crescent Augustine Heights QLD

5  4  2 

Looking for a once in a lifetime investment with a \$720 per week rental return or want a family member to live close to you but also enjoy your own space - this is a never to be repeated property design and a spectacular opportunity for large families or a savvy investor.

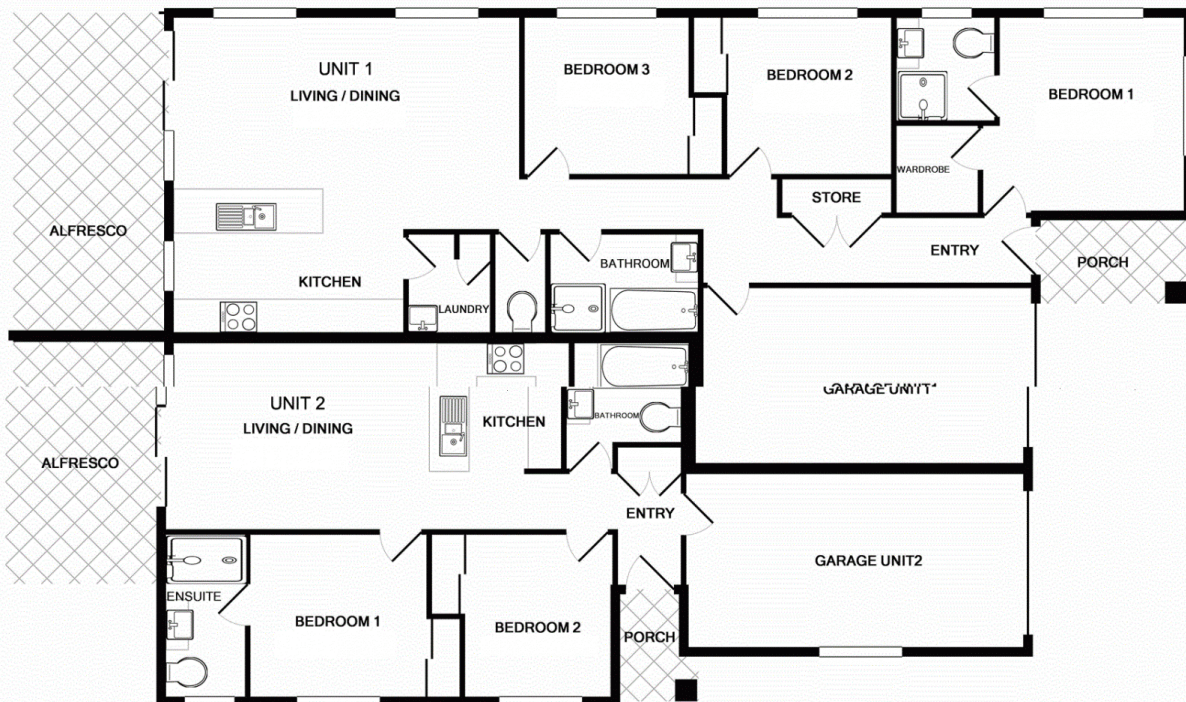
Set up as two units with the bonus of individual meters but only one lot of rates, you can live in one, while renting out the other, or rent both out and reap the financial rewards. Alternatively, a great option for the elderly relatives to be close at hand, or the older children who you can't quite move out of home because your cooking is too good, or the free maid service is too hard to give up - get them paying rent next door, off your couch and onto their own.

Near new and immaculately kept with a large private yard space for each unit, modern designed kitchens and

**Price** : \$ 645,000  
**Building Size** : 248.9 sqm  
**Land Size** : 666 sqm  
**View** : <https://www.lavieps.com.au/sale/qld/ips-wich-west-moreton/augustine-heights/residential/house/5680874>



## 15 Catchlove Crescent, Unit 1 & 2, Augustine Heights



Whilst every attempt has been made to ensure the accuracy of the floor plan contained here, measurements of doors, windows, rooms and any other items are approximate and no responsibility is taken for any error, omission, or mis-statement. This plan is for illustrative purposes only and should be used as such by any prospective purchaser. The services, systems and appliances shown have not been tested and no guarantee as to their operability or efficiency can be given