



## 50 Tamborine Street South Ripley QLD

4  2  2 

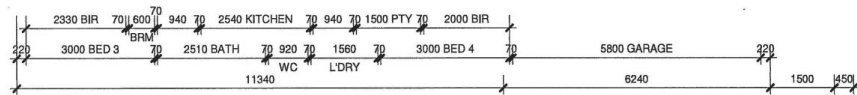
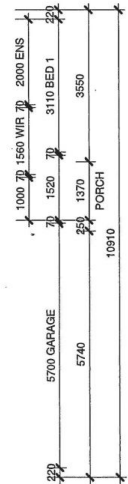
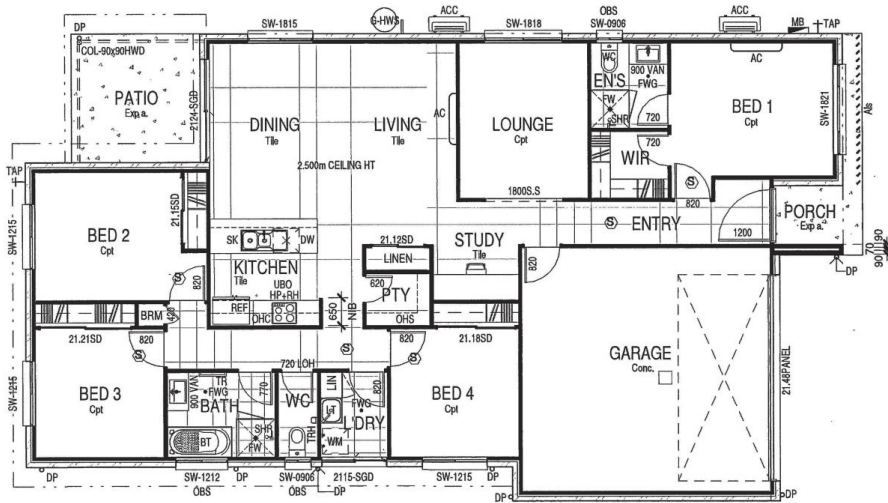
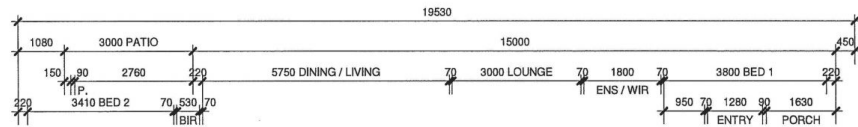
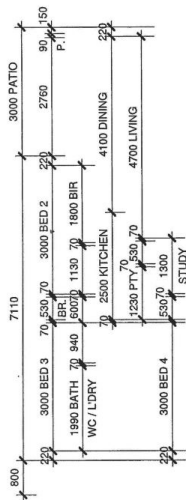
Under Contract by Jill Porkar

This beautiful brand new home located in the booming Providence of South Ripley offers high quality designer finishes and promotes a comfortable, happy and healthy lifestyle for the family or even as an investment property with fantastic depreciation benefits.

**Price** : \$ 430,000  
**Land Size** : 350 sqm  
**View** : <https://www.lavieps.com.au/sale/qld/ipswich-west-moreton/south-ripley/residential/house/5680879>

### Features:

- Master bedroom with walk in robe and ensuite
- 3 good size bedrooms with built ins
- Air conditioner in master bedroom and main living area
- Ceiling fans in all bedrooms and living area
- Open plan kitchen, dining, living area
- Separate lounge
- Separate study area
- 4 burner gas stove



LaVie  
property solutions