



16 Timberlake Place Springfield Lakes QLD

4  2  2 

Dreaming of a house that is a home and a life with a lifestyle? This gorgeous property in the heart of Springfield Lakes is filled with designer flair and spaces built for living in. So close to the Lakes, Ovals, Shops and Schools, this is one of those once in a lifetime properties with a price tag that will surprise you.


Price : \$ 455,000
Land Size : 400 sqm
View : <https://www.lavieps.com.au/sale/qld/ipswich-west-moreton/springfield-lakes/residential/house/5680925>

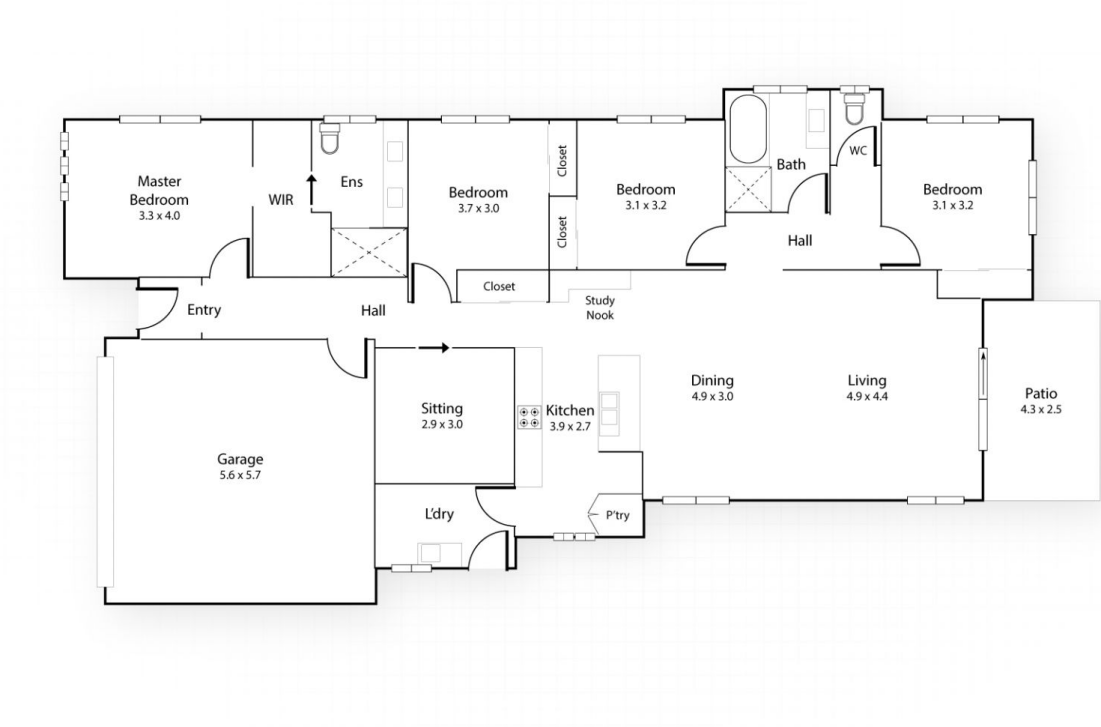
16 Timberlake Place offers:

- * 4 spacious bedrooms including master with walk in robe and ensuite
- * Trendy kitchen with glass mosaic splashback tiles, gas cooktop and dishwasher
- * Open plan gloss tiled living and dining areas leading to the outdoor entertaining and garden
- * Separate lounge room, retreat, kids tv room or bonus guest bedroom

16 Timberlake Place, **Springfield Lakes QLD**



 x 4	 x 2	 x 2
Internal	External	Total
173m²	10.8m²	183.8m²



Please note: The intentions behind this floor plan are for illustrative purposes and should be viewed as a guide only. While every attempt is made to ensure accuracy, any potential buyers should proceed to seek their own measurements and advice before any purchase is made.