

4 Alfred Place Springfield Lakes QLD

3  2  2 

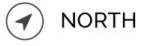
This beautiful property has so much to offer that many similar homes do not. You will instantly fall in love with this bright fresh home in a family friendly cul de sac surrounded by parks and walking tracks as well as in the heart of Springfield Lakes, walking distance to local schools, train station and all amenities.

Price : \$ 375,000
Land Size : 336 sqm
View : <https://www.lavieps.com.au/sale/qld/ipswich-west-moreton/springfield-lakes/residential/house/5681023>

Features:

- 3 great sized bedrooms all with built-ins
- Master Bedroom with ensuite and built-ins
- 2 Spacious living areas or 4th bedroom
- Ducted conditioning
- Solar panels with 1.4kw
- Excellent open plan living/dining with the kitchen positioned, perfect entertaining and family meals
- Second Bathroom with full length bath and separate shower

4 Alfred Place, **Springfield Lakes QLD**



 x 3

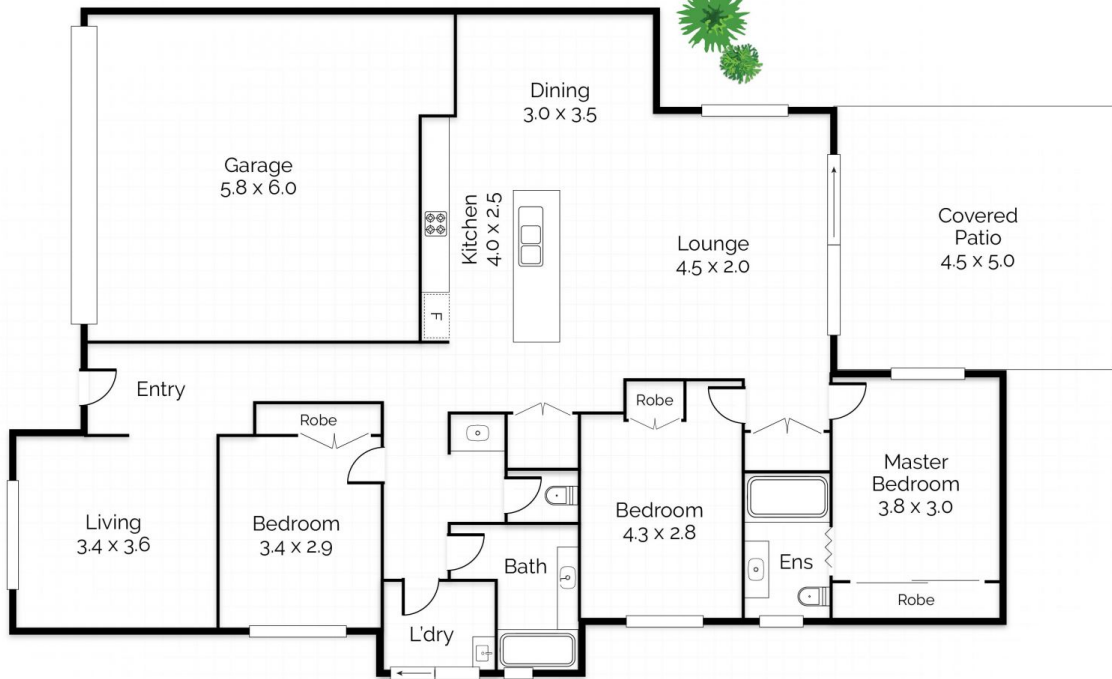
 x 2

 x 2

Internal
187m²

External
22m²

Total
209m²



Floor Plan
Ground Floor

Conditions of use: All floor plan measurements, positions and angles are approximate and for illustrative purposes only. Hausable makes no guarantee as to the accuracy of any measurements, symbols or textures as the intent of this floor plan is to indicate the approximate layout of the property only, and must not be relied upon for any other purpose, whatsoever. While every attempt at accuracy is made, potential buyers must seek their own independent professional measurements to determine the homes suitability before purchase. Hausable accepts no responsibility or liability for any loss, however arising, from the use of this floorplan. This floor plan must not be reused, or resold for any reason without prior written consent from Hausable Pty Ltd.