



### 21 Ash Avenue Springfield Lakes QLD

3  2  1 

The original Plantation Homes Display in the Summit Village in Springfield Lakes is on the market for the first time. This popular design with great floorplan had all the Display upgrades - ducted air, feature lighting, fabulous decking and landscaping and of course the famous Plantation Homes kitchen. Within walking distance from schools, shops, parks, Lakes and transport, this fantastic street is in a very popular location.

**Price** : \$ 385,000  
**Land Size** : 320 sqm  
**View** : <https://www.lavieps.com.au/sale/qld/ipswich-west-moreton/springfield-lakes/residential/house/5681047>

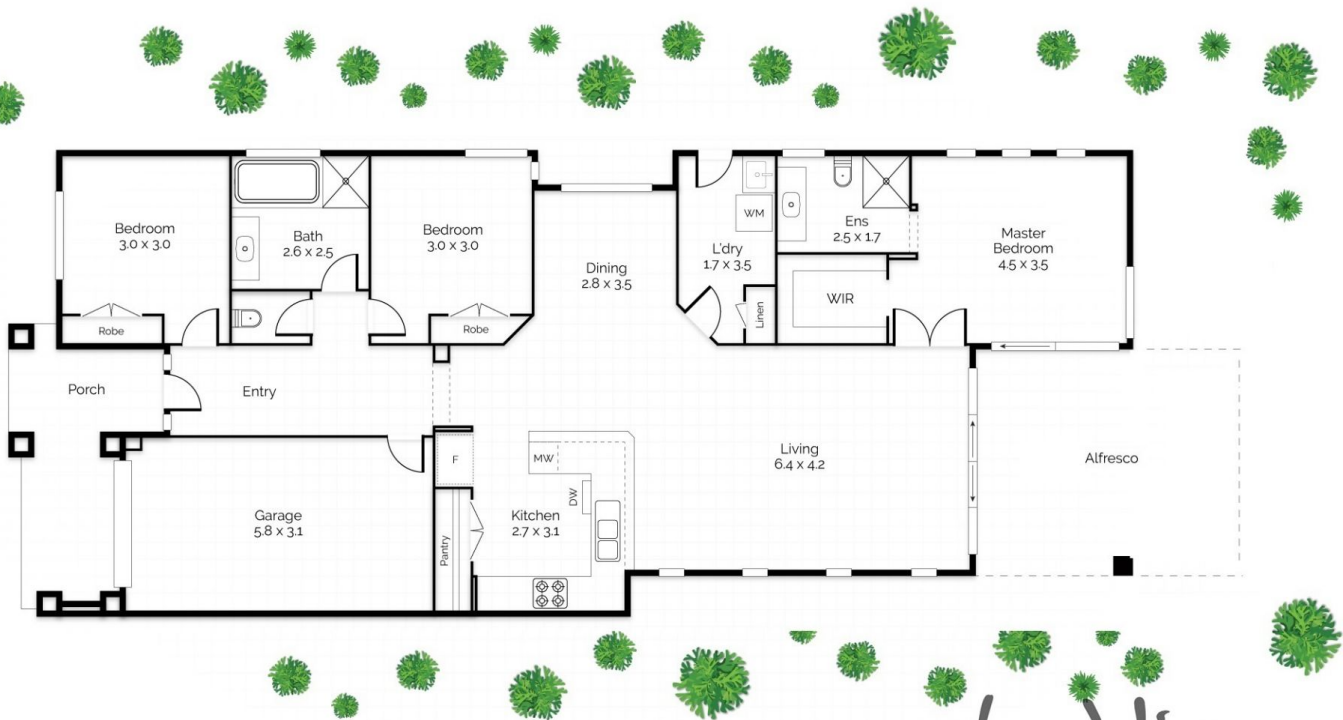
21 Ash Avenue:

- \* 3 spacious bedrooms all with built ins
- \* Master bedroom with ensuite, walk in robe and sliding door to deck
- \* Large open plan tiled living and dining areas
- \* Great kitchen with plenty of bench space, extra large pantry, dishwasher, built in microwave and 900mm

21 Ash Avenue, Springfield Lakes QLD



|   |   |   |
|---|---|---|
|  x 3 |  x 2 |  x 1 |
| Internal<br>157m <sup>2</sup>   | External<br>18m <sup>2</sup>  | Total<br>138m <sup>2</sup>  |



Floor Plan  
Ground Floor

La Vie  
property solutions

**Conditions of use:** All floor plan measurements, positions and angles are approximate and for illustrative purposes only. Hausable makes no guarantee as to the accuracy of any measurements, symbols or textures as the intent of this floor plan is to indicate the approximate layout of the property only, and must not be relied upon for any other purpose, whatsoever. While every attempt at accuracy is made, potential buyers must seek their own independent professional measurements to determine the homes suitability before purchase. Hausable accepts no responsibility or liability for any loss, however arising, from the use of this floorplan. This floor plan must not be reused, or resold for any reason without prior written consent from Hausable Pty Ltd.