



35 James Josey Avenue Springfield Lakes QLD

4 🏠 2 🚿 2 🚗

So close to the train station and school, yet sitting on your back pergola looking through a forest like backdrop to the parkland beyond, hearing the sound of a bubbling creek at you back fence, you feel so far away from it all.

This fantastically located property with lots of recent updates sits on a large fully fenced 688m2 block with room for the kids, pets, pool, sheds, boat or caravan. Not often does a family sized home on a large allotment in such a handy location come on the market, but here it is ? the perfect property, ready to become your new home.

35 James Josey Avenue offers:

- * 4 spacious bedrooms with built in wardrobes
- * Large master bedroom with ensuite and walk in robe
- * Roomy open plan tiled dining and living rooms

Price : \$ 470,000
Land Size : 688 sqm
View : <https://www.lavieps.com.au/sale/qld/ipswich-west-moreton/springfield-lakes/residential/house/5681066>

35 James Josey Avenue, **Springfield Lakes QLD**



 x 4

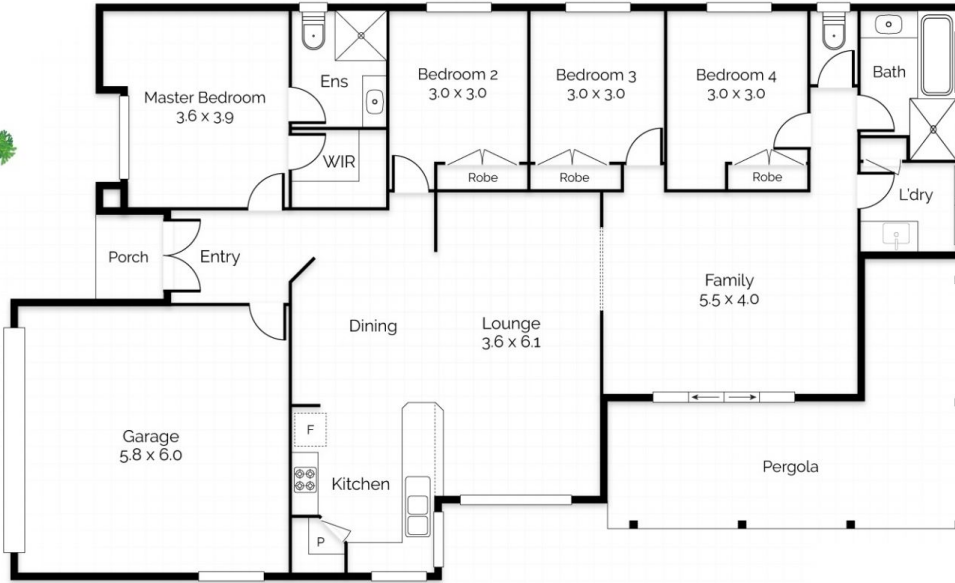
 x 2

 x 2

Internal
189m²

External
28m²

Total
217m²



Floor Plan
Ground Floor

Conditions of use: All floor plan measurements, positions and angles are approximate and for illustrative purposes only. Häusable makes no guarantee as to the accuracy of any measurements, symbols or textures as the intent of this floor plan is to indicate the approximate layout of the property only, and must not be relied upon for any other purpose, whatsoever. While every attempt at accuracy is made, potential buyers must seek their own independent professional measurements to determine the homes suitability before purchase. Häusable accepts no responsibility or liability for any loss, however arising, from the use of this floorplan. This floor plan must not be reused, or resold for any reason without prior written consent from Häusable Pty Ltd.