



**15 Heathcote Street South Ripley QLD**

4  2  2 

Beautiful Fully Ducted Executive Style Family Home with all the extras in PROVIDENCE Located opposite a park this executive style home not only gives you a sense of privacy and relaxation, it truly stands out from the rest offering all the extras such as, ducted air-conditioning throughout, an iPod dock/speaker system throughout the property, so you can enjoy your favourite tune whilst entertaining.

**Land Size** : 400 sqm  
**View** : <https://www.lavieps.com.au/sale/qld/ipswich-west-moreton/south-ripley/residential/house/5681093>

**Properties WOW Features:**

- Master suite with walk in robe, fans and ducted AC, plus an ensuite with twin vanities
- Further 3 bedrooms with built in robes, fans and ducted AC
- Separate laundry room
- Main bathroom with separate toilet
- Stylish and open plan kitchen, European style stainless

15 Heathcote Street, South Ripley QLD



 x 4

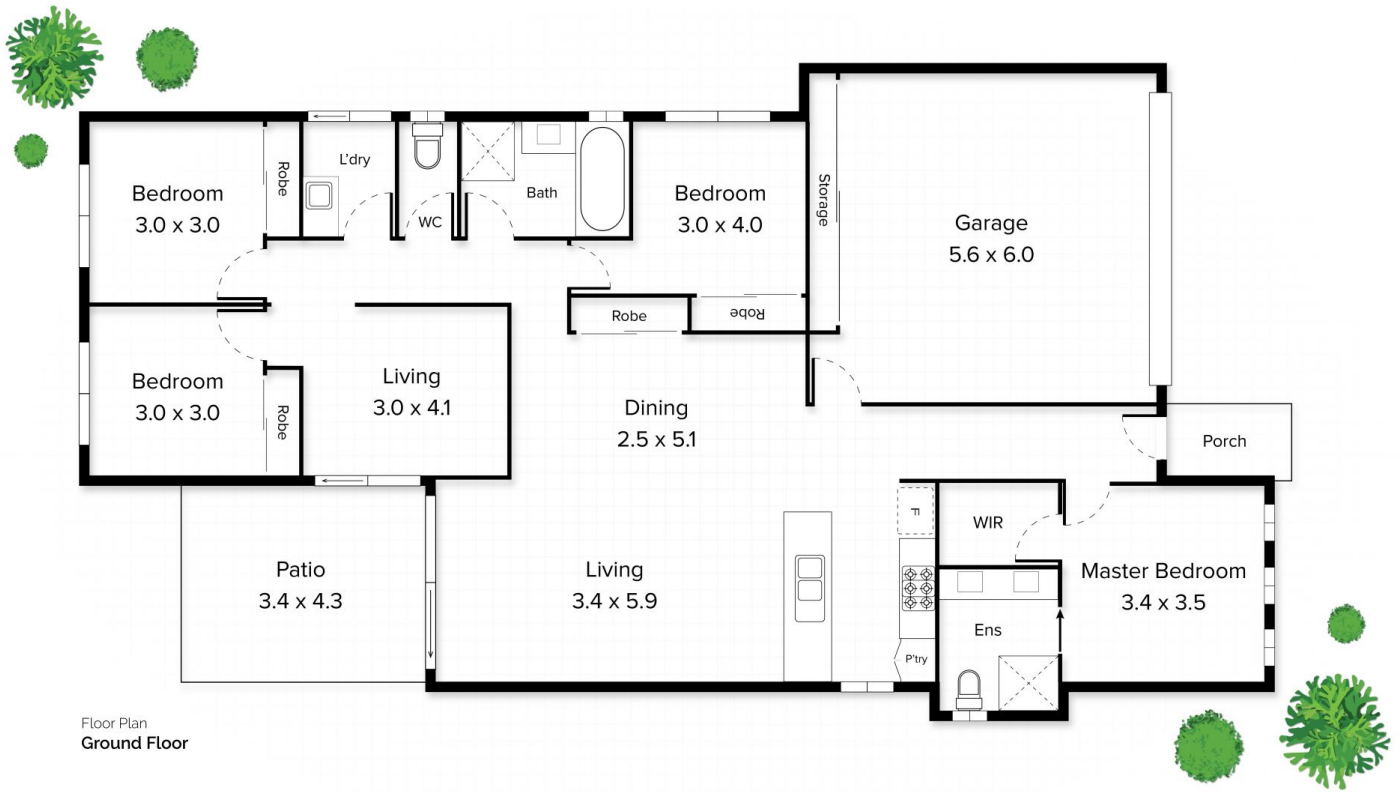
 x 2

 x 2

Internal  
**159m<sup>2</sup>**

External  
**18m<sup>2</sup>**

Total  
**177m<sup>2</sup>**



Floor Plan  
**Ground Floor**

Conditions of use: All floor plan measurements, positions and angles are approximate and for illustrative purposes only. Hausable makes no guarantee as to the accuracy of any measurements, symbols or textures as the intent of this floor plan is to indicate the approximate layout of the property only, and must not be relied upon for any other purpose, whatsoever. While every attempt at accuracy is made, potential buyers must seek their own independent professional measurements to determine the homes suitability before purchase. Hausable accepts no responsibility or liability for any loss, however arising, from the use of this floorplan. This floor plan must not be reused, or resold for any reason without prior written consent from Hausable Pty Ltd.