




7 Yellowstone Way Springfield Lakes QLD

4  2  2 

No need to click your heels or follow the yellow bricks for this fantastic family home - it's right here, conveniently located and in the sought after Springfield Central School catchment - no wizards or tornados necessary.

Price : \$ 418,000

View : <https://www.lavieps.com.au/sale/qld/ipswich-west-moreton/springfield-lakes/residential/house/5681098>

With space to spare and room to grow, this split level home with high ceilings and two big living areas - 7 Yellowstone Way has so much to offer:

- * Stunning rendered façade with front portico and tropical landscaping
- * Four bedrooms or use the 4th room as a nursery or office
- * Extra large carpeted formal lounge with high ceilings, room for the whole family to gather for movie night
- * Open plan tiled family and dining room
- * Impressive entrance way with high ceilings and split level hallway

7 Yellowstone Way, **Springfield Lakes QLD**



 x 4

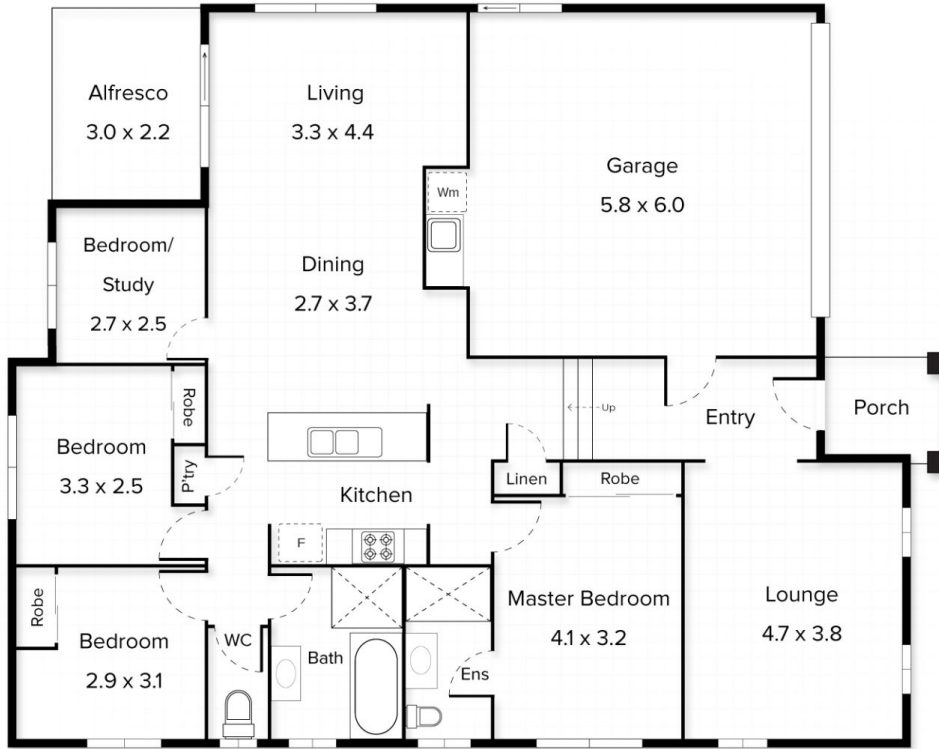
 x 2

 x 2

Internal
175m²

External
12m²

Total
187m²



Floor Plan
Ground Floor

Conditions of use: All floor plan measurements, positions and angles are approximate and for illustrative purposes only. Hausable makes no guarantee as to the accuracy of any measurements, symbols or textures as the intent of this floor plan is to indicate the approximate layout of the property only, and must not be relied upon for any other purpose, whatsoever. While every attempt at accuracy is made, potential buyers must seek their own independent professional measurements to determine the homes suitability before purchase. Hausable accepts no responsibility or liability for any loss, however arising, from the use of this floorplan. This floor plan must not be reused, or resold for any reason without prior written consent from Hausable Pty Ltd.