

## 16 Ash Avenue Springfield Lakes QLD

4  2  2 

This stunning former Ausbuild Display home stands out from the crowd with its gorgeous raked ceilings, feature windows and 'OMG check this out!' kitchen.

Not your average home, with a bit of 'wow' around every corner, modern architectural features and a warm homely feeling at the same time, this home has something to please everyone.

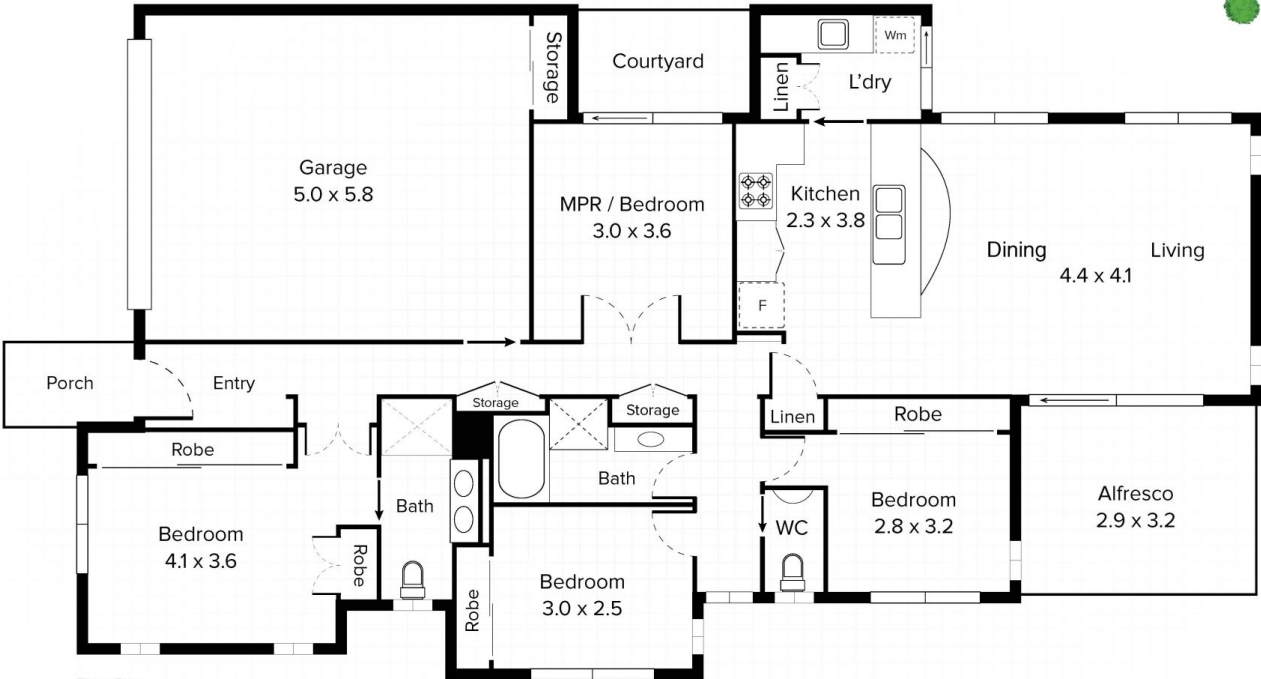
16 Ash Avenue, The Summit features:

- \* 4 spacious bedrooms or 3 bedrooms and a multipurpose room with it's own courtyard that could also be a second lounge, media room or study
- \* Lovely master bedroom with his and hers robes (his being the smaller one of course :-)) and double vanity ensuite
- \* Fantastic entertainers kitchen with feature suspended

**Price** : \$ 420,000  
**Land Size** : 336 sqm  
**View** : <https://www.lavieps.com.au/sale/qld/ipswich-west-moreton/springfield-lakes/residential/house/5681144>



 x 4	 x 2	 x 2
Internal <b>168m<sup>2</sup></b>	External <b>14m<sup>2</sup></b>	Total <b>182m<sup>2</sup></b>



Floor Plan  
**Ground Floor**

**Conditions of use:** All floor plan measurements, positions and angles are approximate and for illustrative purposes only. Hausable makes no guarantee as to the accuracy of any measurements, symbols or textures as the intent of this floor plan is to indicate the approximate layout of the property only, and must not be relied upon for any other purpose, whatsoever. While every attempt at accuracy is made, potential buyers must seek their own independent professional measurements to determine the homes suitability before purchase. Hausable accepts no responsibility or liability for any loss, however arising, from the use of this floorplan. This floor plan must not be reused, or resold for any reason without prior written consent from Hausable Pty Ltd.