



## 20 Fontanna Way Springfield Lakes QLD

5 🏠 3 🚗 2 🚗

Still wondering where to take the family for the summer holidays? Why not just stay home! You will get no arguments from your loved ones when this fabulous property is your home - in fact love ones will probably be coming out of the woodwork to hang out at your place, but you sure will have room for them all!

**Price** : \$ 700,000  
**Land Size** : 601 sqm  
**View** : <https://www.lavieps.com.au/sale/qld/ipswich-west-moreton/springfield-lakes/residential/house/5681178>

Fantastically designed not only as a large family home but as a dual living dream home. Whether you are looking for room for the grandparents, have out of town family and guests staying or just can't convince the final birdie to leave the nest, (average age for an male 'child' in Australia to leave home is now 28 - sorry :- ) ) you won't find many homes offering the size and the lifestyle of 20 Fontanna Way.

Featuring:

<https://www.lavieps.com.au>

20 Fontanna Way, **Springfield Lakes QLD**



 x 5

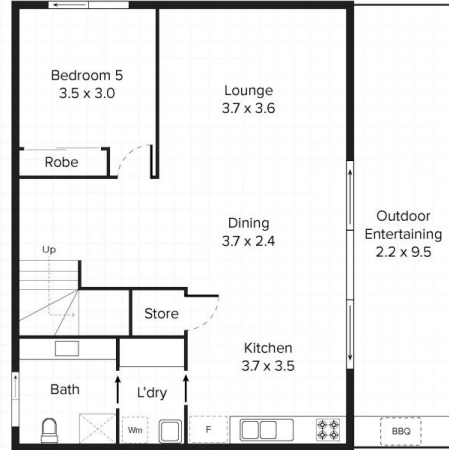
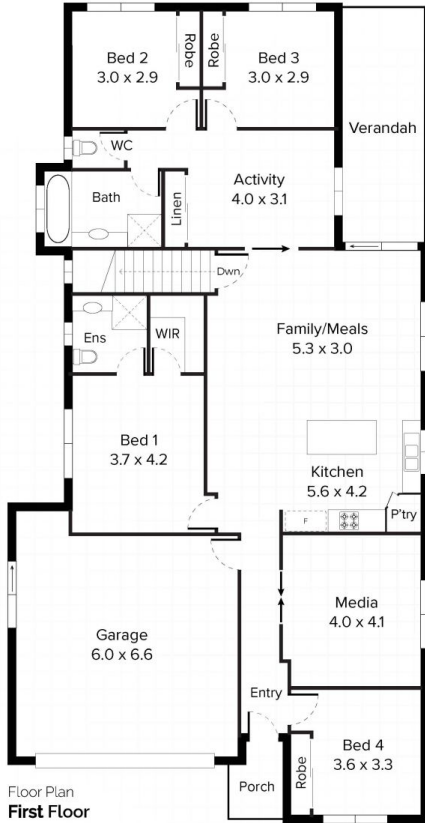
 x 3

 x 2

Internal  
**272m<sup>2</sup>**

External  
**38m<sup>2</sup>**

Total  
**310m<sup>2</sup>**



Conditions of use: All floor plan measurements, positions and angles are approximate and for illustrative purposes only. Hausable makes no guarantee as to the accuracy of any measurements, symbols or textures as the intent of this floor plan is to indicate the approximate layout of the property only, and must not be relied upon for any other purpose, whatsoever. While every attempt at accuracy is made, potential buyers must seek their own independent professional measurements to determine the homes suitability before purchase. Hausable accepts no responsibility or liability for any loss, however arising, from the use of this floorplan. This floor plan must not be reused, or resold for any reason without prior written consent from Hausable Pty Ltd.