

4 Aspect Terrace Springfield Lakes QLD

5 🛏 3 🚿 2 🚗

Once in a while a property comes on the market that just calls to you. A house that you know you could proudly call home. A home that feels like it was built just for you. Big on size, plenty of character and warmth, and superb lake and mountain views, this is it .. 'Lakeview', your forever home.

Price : \$ 575,000
Land Size : 464 sqm
View : <https://www.lavieps.com.au/sale/qld/ipswich-west-moreton/springfield-lakes/residential/house/5681188>

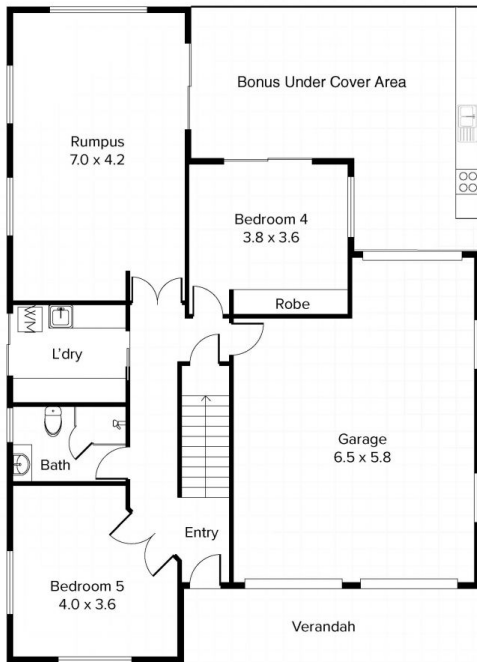
This colonial style masterpiece has all the room you could ever need with 5 big bedrooms, multiple large living spaces and 3 full bathrooms, this home is perfect for the large and extended families.

'Lakeview' at 4 Aspect Terrace offers:

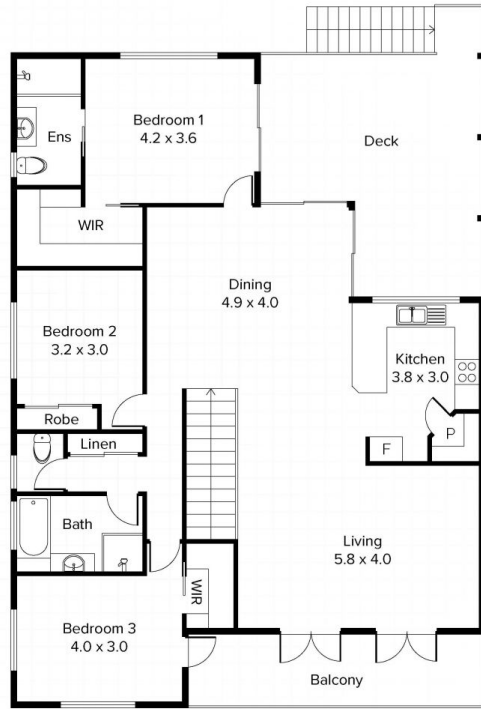
- * 5 spacious bedrooms all with built in wardrobes
- * Master bedroom with ensuite, walk in robe, sliding door to the deck, and some of the best views in the area to wake

4 Aspect Terrace, **Springfield Lakes QLD**

 x 5
  x 3
  x 2
 Internal **293m²** External **58m²** Total **351m²**



Floor Plan
Ground Floor



Floor Plan
Upper Floor

Conditions of use: All floor plan measurements, positions and angles are approximate and for illustrative purposes only. Hausable makes no guarantee as to the accuracy of any measurements, symbols or textures as the intent of this floor plan is to indicate the approximate layout of the property only, and must not be relied upon for any other purpose, whatsoever. While every attempt at accuracy is made, potential buyers must seek their own independent professional measurements to determine the homes suitability before purchase. Hausable accepts no responsibility or liability for any loss, however arising, from the use of this floorplan. This floor plan must not be reused, or resold for any reason without prior written consent from Hausable Pty Ltd.