






259 Lakeside Avenue Springfield Lakes QLD

5  3  2 

Positioned next to one of Springfield Lakes' nicest parks, a great elevated location to take in the breezes and sunsets, and a two story Plantation Homes designer residence - you can't beat this home for space, location and luxury.

View : <https://www.lavieps.com.au/sale/qld/ipswich-west-moreton/springfield-lakes/residential/house/5681197>


With 5 bedrooms, 3 living areas, an outdoor entertainer' dream, and all the upgrades and extras that come with the often out of reach Plantation Homes price tag, this home is packed full of goodies on a prime block of Promenade land - you couldn't even build it again at this price!

259 Lakeside Avenue offers:

- * Stunning double level design with a great family friendly floorplan and high ceilings
- * 5 bedrooms with one downstairs, great as a home office or bedroom for guests ? or the family member that snores
- * Spacious, sprawling master suite with massive hotel style

259 Lakeside Avenue, **Springfield QLD**

 x 5

 x 2.5

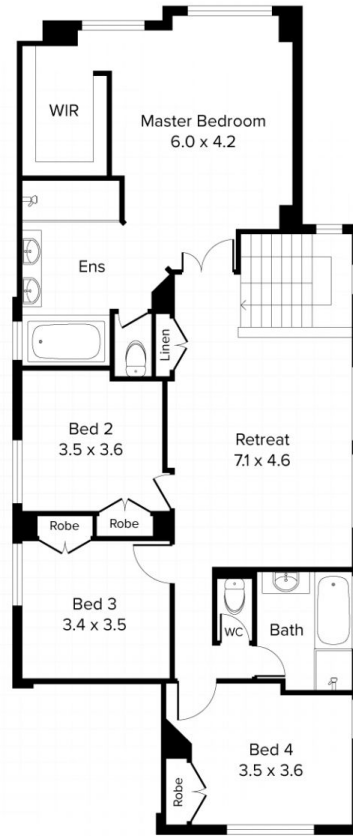
 x 2



Internal
279m²

External
50m²

Total
329m²



Conditions of use: All floor plan measurements, positions and angles are approximate and for illustrative purposes only. Hausable makes no guarantee as to the accuracy of any measurements, symbols or textures as the intent of this floor plan is to indicate the approximate layout of the property only, and must not be relied upon for any other purpose, whatsoever. While every attempt at accuracy is made, potential buyers must seek their own independent professional measurements to determine the homes suitability before purchase. Hausable accepts no responsibility or liability for any loss, however arising, from the use of this floorplan. This floor plan must not be reused, or resold for any reason without prior written consent from Hausable Pty Ltd.