



9 Abbey Court Springfield Lakes QLD

3  2  2 

Only applications received via [realestate.com.au](https://www.realestate.com.au) will be taken into consideration. Once applications processed and deemed suitable for the property, we will be in contact to arrange for a private inspection.

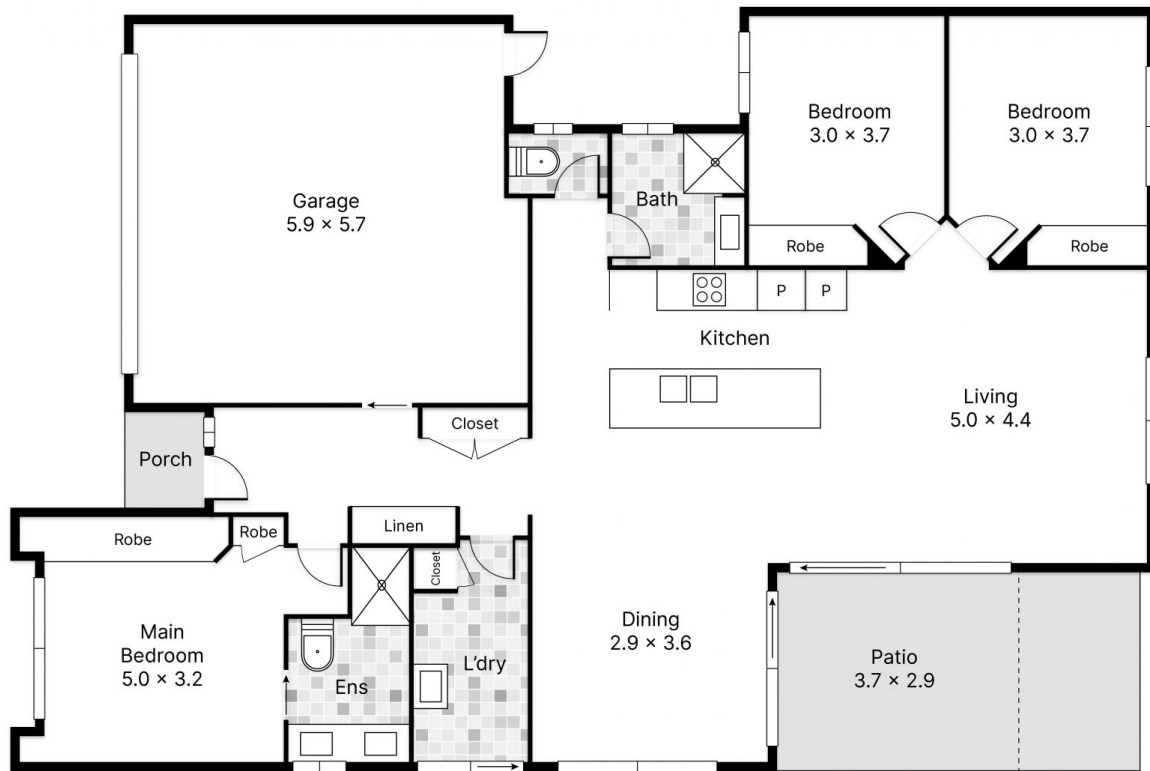
Land Size : 336 sqm
View : <https://www.lavieps.com.au/lease/qld/ipswic-h-west-moreton/springfield-lakes/residential/house/7979659>

This beautifully presented home is close to everything and offers, space, style & privacy. The Master Bedroom is situated at the front of the house and offers air con, ceiling fan and a large built in robe, with an additional shoe cupboard! The remaining two bedrooms are at the back of the property and also have ceiling fans and built in robes.

A well equipped kitchen including dishwasher is surrounded by a large tiled living area which is beautifully light and airy and overlooks the private covered patio.



Nathalie Le Brun
07 3470 1777



9 Abbey Court, **Springfield Lakes** | Internal: **152m²** External: **12m²** Total: **164m²**

Conditions of use: All floor plan measurements, positions and angles are approximate and for illustrative purposes only. Hausable makes no guarantee as to the accuracy of any measurements, symbols or textures as the intent of this floor plan is to indicate the approximate layout of the property only. While every attempt at accuracy is made, potential buyers must seek their own independent professional measurements to determine the homes suitability before purchase. Hausable accepts no responsibility or liability for any loss from the use of this floorplan. This floor plan must not be reused, or resold for any reason without prior written consent from Hausable Pty Ltd.

3 x Bed x 3 2 x Bath x 2 2 x Car

NORTH

